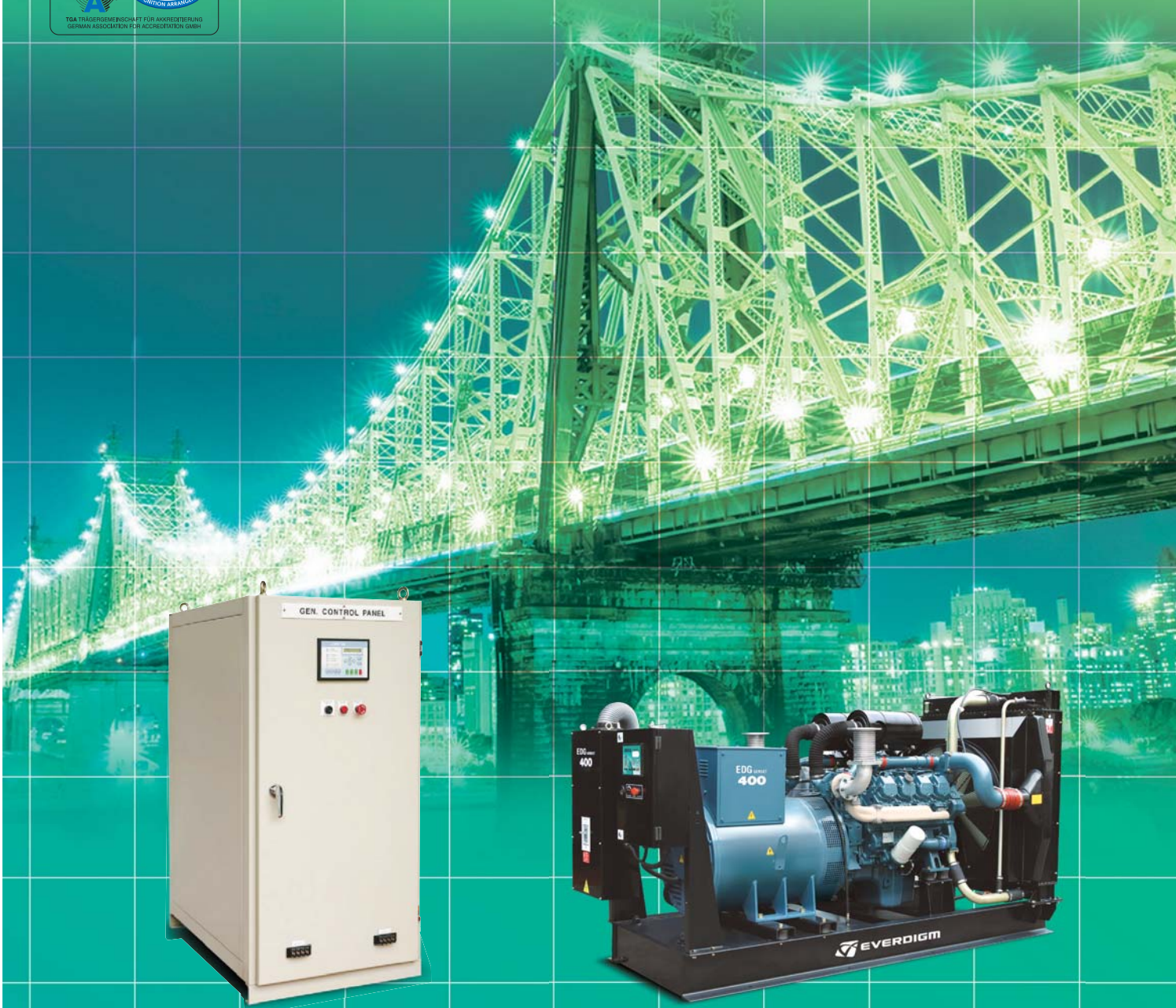


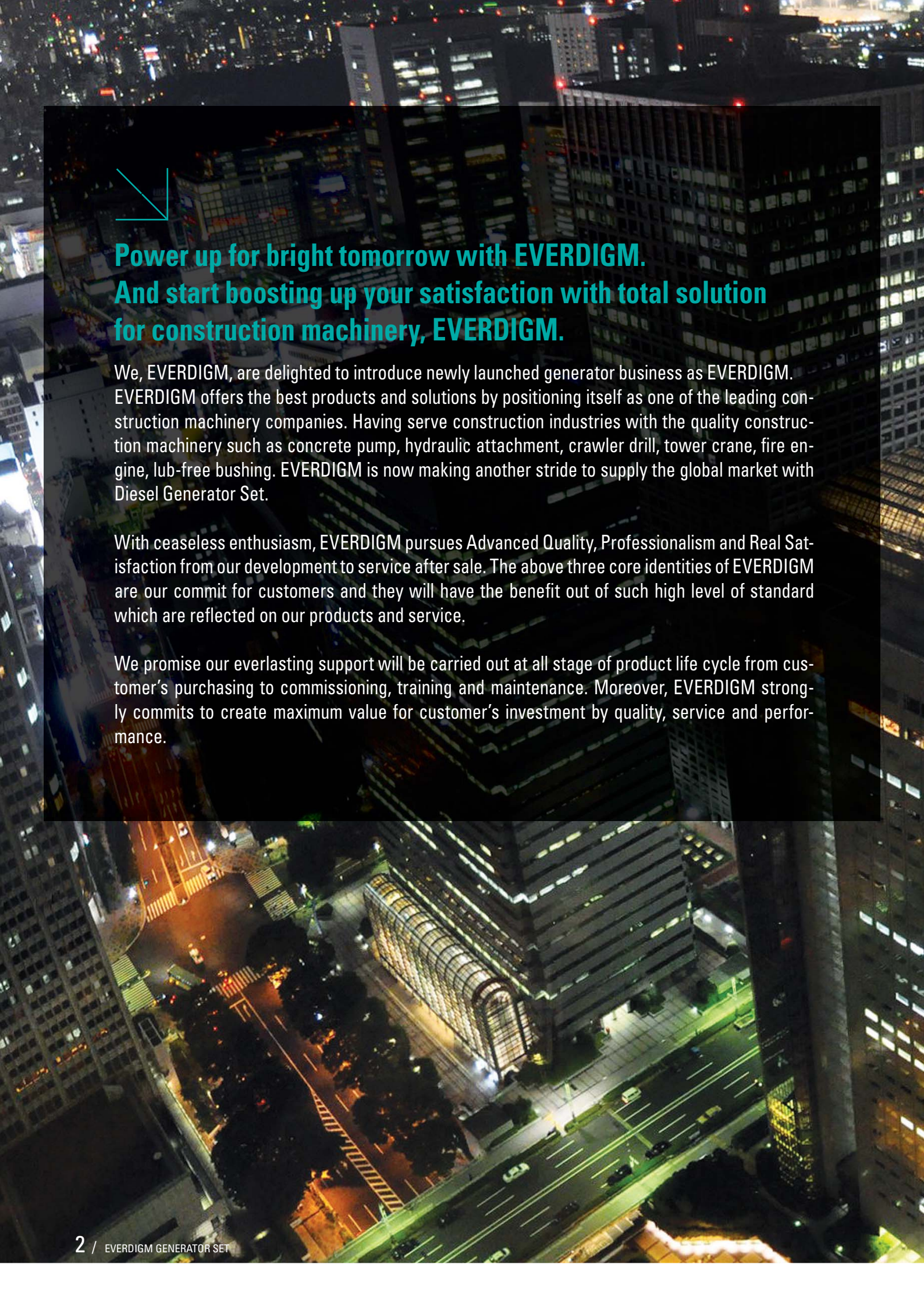
Build the Future

www.everdigm.com



EVERDIGM GENERATOR SET





Power up for bright tomorrow with **EVERDIGM**.
And start boosting up your satisfaction with total solution
for construction machinery, **EVERDIGM**.

We, EVERDIGM, are delighted to introduce newly launched generator business as EVERDIGM. EVERDIGM offers the best products and solutions by positioning itself as one of the leading construction machinery companies. Having served construction industries with the quality construction machinery such as concrete pump, hydraulic attachment, crawler drill, tower crane, fire engine, lub-free bushing. EVERDIGM is now making another stride to supply the global market with Diesel Generator Set.

With ceaseless enthusiasm, EVERDIGM pursues Advanced Quality, Professionalism and Real Satisfaction from our development to service after sale. The above three core identities of EVERDIGM are our commitment for customers and they will have the benefit out of such high level of standard which are reflected on our products and service.

We promise our everlasting support will be carried out at all stages of product life cycle from customer's purchasing to commissioning, training and maintenance. Moreover, EVERDIGM strongly commits to create maximum value for customer's investment by quality, service and performance.



EVERDIGM

Diesel Generator Set

To achieve the excellent combustion and low fuel consumption, the state-of-the-art hightech injection and charging system applied

Easily accessible service and maintenance points contribute to the ease of service of the generator set

To improve the performance of products, high quality auxiliaries equipment applied

Arrangement device for easy operation

Economical operating and maintenance cost



Applied the digital controller
Display the various information of genset using the high capacity LCD
Optimized protection device built in the digital controller against genset malfunctioning and abnormal conditions
Remote control and monitoring with PC(MODBUS protocol)

High capacity interruption
Arc extinguishers confine and extinguish the arc drawn between contacts each time the circuit breaker interrupts current flow
High capacity silver alloy contacts for long useful life

Separated bracket are applied between base frame and control panel to protect vibration



2/3 pitch winding is applied to reduce the 3rd harmonics

Low Frequency and over exciting protection device as standards

Standards : IEC 60034-1, CEI EN 60034-1, BS4999-5000, VDE 0530, OVE M-10, NF 51-100,111, NEMA MG 1.22, CE

Specialized engine for genset

High power at low operation cost

Well-balanced to produce smooth and vibration-free operation with low noise level

Super quality and durability

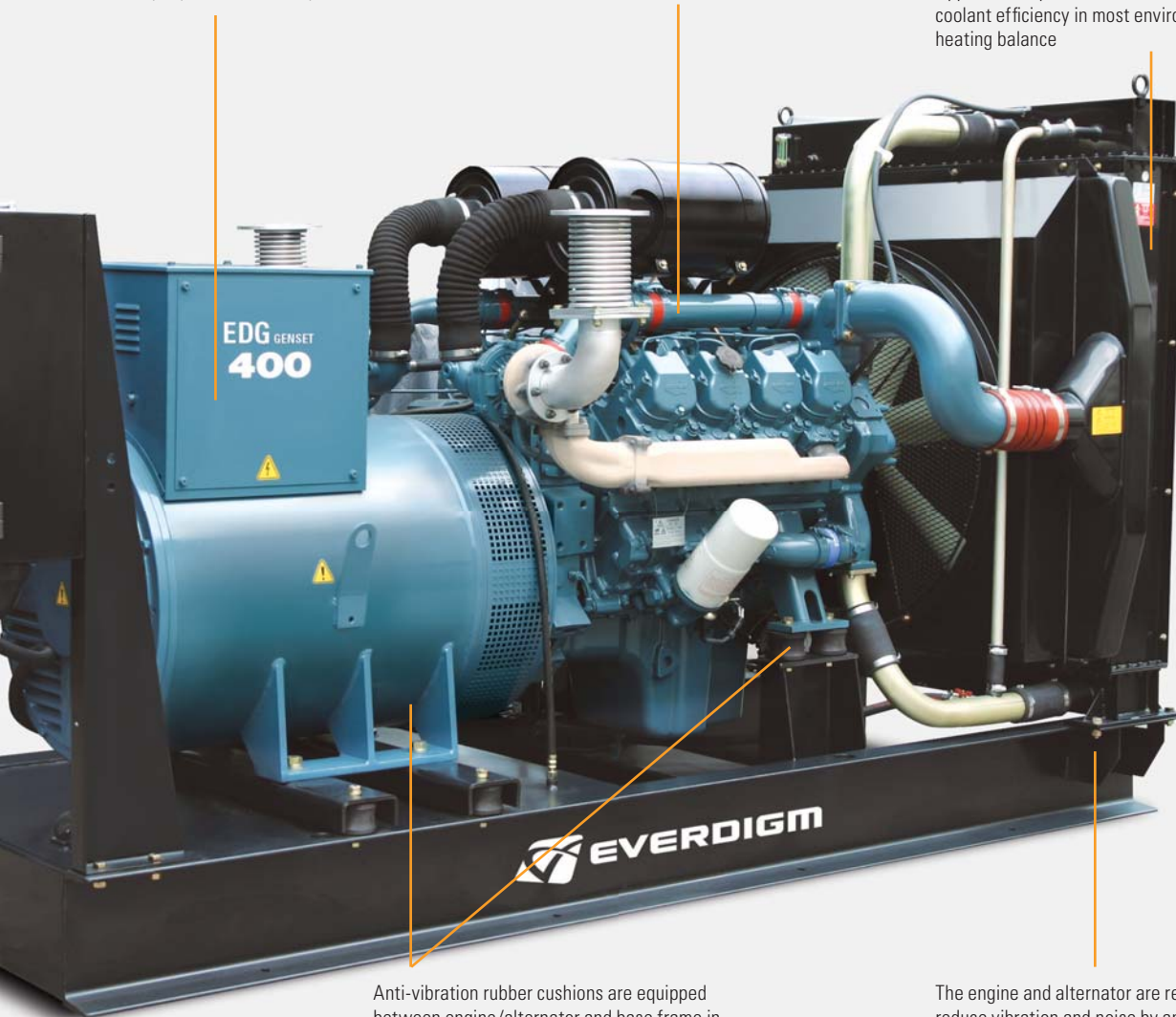
Coolant Water Heater

An aid to cold weather starting

To prevent winter-sowing in cold area

Constant circulation of coolant through the engine achieves even heat distribution

Applied the Optimized coolant system and improved coolant efficiency in most environments by analysis of heating balance



Anti-vibration rubber cushions are equipped between engine/alternator and base frame in order to absorb vibration

The engine and alternator are resiliently mounted to reduce vibration and noise by analysis of strength and stress

The standard fuel tank includes suction and return lines with a sight level gauge and drain plug

EVERDIGM

Diesel Generator Set

We will supply our products as the customer's requirement through variety product line with rapid actions

We shall digital controller the genset shall be equipped digital controller as a standard

01 STANDARD (SKID TYPE)



Applications : For Standby and Prime Power
Installation : Indoor
Apartment, Commercial Building, Factory, etc

04 BONNET TYPE



Applications : For Standby and Prime Power
Installation : Outdoor
Stony Mountain, Mine,
Construction Work, etc

SELF STANDING CONTROL PANEL



Optimized wiring to prevent wrong connection
Offering economical solution with compact sizes
Built in the various protection device

ATS(Automatic Transfer Switch) Control Panel



Manual or automatic operation
Minimum switching repercussion of coil change by the unique latch mechanism
One-coil-change system
Superior contacting capacity
Latch condition is visible with transfer position indicator
Control switches located on the front of the door for ease of operation
Excellent breaking capacity designed for large arc extinguishing chamber sufficient enough to interrupt a large amount of electric current

02 SOUND PROOF TYPE



Applications : For Standby and Prime Power
 Installation : Outdoor
 Apartment, Commercial Building, Factory,
 Fish-farm, Gas Station Construction Area, etc
 Restriction are for noise : Noise level is below
 75dB[A] at 7m

03 TRAILER TYPE



Applications : For Standby and Prime Power
 Installation : Outdoor
 Airport, Harbor,
 Road Construction Work, etc
 Easily Move to not prepare power system area

05 GAS GENSET



Applications : For Prime Power
 Installation : Indoor
 Apartment, Commercial
 Building, Factory, etc

MOUNTED CONTROL PANEL



Main Feature

Digital controller
 Easy operation and control
 Maintenance free
 kW/kWH/PF meter as standds
 (Compare to analogue panel)

PROTECTIVE FUNCTION

Protection	Function	Engine Stop	MCB Trip	Alarm LED	Error Message	
Heavy Fault (Shut Down)	Alarm LED ON, Display Error Message (S: xxxxxxx) Engine Stop, MCB Trip	Low Oil Pressure, High Cooant Temp, Fail to Start, Over Speed, Emergency Stop, Over Voltage	X	X	X	X
		Over Current, Under Voltage, OCGR(option)	N/A	X	X	X
Light Fault (Warning)	Alarm LED ON, Display Error Message (W: xxxxxxx)	Failure MCB, Failure Charging, Over Load, Low Coolant Temp, LFO Level(option) Battery Low/High Voltage	N/A	N/A	X	X

EVERDIGM

Diesel Generator Set

A special Manufacturer of digital generator set

Applied the optimal algorithm in the digital controller

PC MONITORING AND CONTROL SYSTEM



Monitoring & Control with Computer

Monitoring and control generator set
 Communication situation
 Select line to line or line to neutral
 Event of alarm or operating
 Emergency stop
 Indicate of LED State



Display

Frequency (Hz)
 Engine speed (rpm)
 Three phase line to line and line to neutral voltage (Vac)
 Three phase current (A)
 Active power [kW], kW hour(kWH)
 Power factor (P.F.)
 Running hours (Hrs)
 Oil pressure (bar)
 Coolant water temperature (°C)
 Battery voltage(Vdc)

Control Function

Fail to start
 Adjustable starting attempt/starting time
 Emergency stop
 Adjustable pre-glow/cooldown time
 Control main circuit breaker
 Check state of LCD/LED
 Adjustable mains power live/failure sensing time

LED Indicator

Alarm	Emergency stop
Manual mode	Auto mode
Remote mode	Running
MCB close	MCB trip

FUNCTION IN ACCORDANCE WITH OPERATING MODE

ITEM	Island Mode			Parallel Mode	
	Manual	Semi-Auto	Automatic	Semi-Auto	Automatic
Start / Stop	Manual	Automatic	Automatic	Manual	Automatic
Load Operation	Manual	Automatic	Automatic	Manual	Automatic
Parallel Operation	N/A	N/A	N/A	Automatic	Automatic
Load Dependent Start / Stop	N/A	N/A	N/A	Manual	Automatic
Priority Selection according to running hours	N/A	N/A	N/A	Manual	Automatic

Note 1. MCB : Main Circuit Breaker, OCGR: Over Current Ground Relay, LFO: Low Fuel Oil Level
 2. "X": Applied, "N/A": Not Applicable



EDGC 10(for Island Operation)



Main Function

- Auto sequencing of genset
- Manual / Automatic / Remote operation
- Power monitoring with LED and LCD (2 line, 20 character)
- Alarm level : Heavy fault, light fault(Display LCD)
- Remote control and monitoring with PC(MODBUS Protocol)
- Backlight-panel lighting with time delay off
- Totally sealed front panel against noise
- Point-to-point wiring

AGC(Automatic Genset Controller, For Parallel Operation)



Main Function

- Parallel operation between generator set
- Parallel operation with main power
 - Base load mode (Apply fixed load)
 - Peak shaving mode (Apply peak load)
 - Load take over mode (Instead of mains power if power failure notify)

PROTECTIVE FUNCTION

Protection	Function	Engine Stop	MCB Trip	Alarm LED	Error Message
Heavy Fault (Shut Down)	Low Oil Pressure, High Coolant Temp, Fail to Start, Over Speed, Emergency Stop, Over Voltage	X	X	X	X
	Over Current, Under Voltage, Reverse Power OCGR(option)	N/A	X	X	X
Light Fault (Warning)	High Frequency 2, Over Voltage 2, Over Current 2, Over Load 2, Unbalance Voltage / Current				
	Failure MCB, Failure Charging, Low Coolant Temp, Battery Low/High Voltage, Low Fuel Oil Level(option), Failure Synchronizing, Over Load 1, High Frequency 1, Over Voltage 1, Over Current 1	N/A	N/A	X	X

Note 1. MCB : Main Circuit Breaker, OCGR: Over Current Ground Relay, LFO: Low Fuel Oil Level
 2. "X": Applied, "N/A": Not Applicable

Product Line-up



DOOSAN ENGINE (E-SERIES)



DOOSAN GAS ENGINE (G-SERIES)



CONTAINERIZED GENERATOR SET (CG-SERIES)



CUMMINS ENGINE (C-SERIES)



MTU ENGINE (M-SERIES)

PRODUCT LINE-UP

DOOSAN ENGINE (E-SERIES)

GENERATOR SET					DOOSAN ENGINE							GEN SET PHYSICAL DATA			
MODEL	STANDBY(kw)		PRIME(kw)		MODEL	STANDBY(Ps)		PRIME(Ps)		FUEL CONSUMPTION (L/H)	BORE & STROKE (mm)	NO. OF CYLINDER	DIMENSION WxLxH(mm)	WEIGHT (Kg)	PAD SIZE WxLxH(mm)
	60Hz (1800rpm)	50Hz (1500rpm)	60Hz (1800rpm)	50Hz (1500rpm)		60Hz (1800rpm)	50Hz (1500rpm)	60Hz (1800rpm)	50Hz (1500rpm)						
EDG-60E	60	52	55	48	DB58	95	80	87	73	18.1	102X118	L-6	850X2100X1240	1300	1400X2800X200
EDG-85E	90	75	80	68	D1146	143	116	130	105	26.6	111X139	L-6	850X2200X1450	1700	1300X3000X300
EDG-130E	130	100	115	91	D1146T	202	160	170	145	35.9	111X139	L-6	850X2200X1510	1800	1300X3000X300
EDG-170E	170	145	155	130	P086TI-1	260	223	237	203	47.5	111X139	L-6	950X2550X1660	2100	1400X3200X300
EDG-200E	200	176	180	160	P086TI	303	270	279	240	56.8	111X139	L-6	950X2590X1660	2100	1400X3200X300
EDG-275E	275	242	250	220	P126TI	405	370	378	328	76.5	123X155	L-6	1110X2890X1630	2400	1500X3400X300
EDG-300E	300	260	275	235	P126TI-2	465	400	418	360	89.5	123X155	L-6	1110X2890X1630	2400	1500X3400X300
EDG-330E	330	280	300	255	P158LE-2	510	437	470	399	93.5	128X142	V-8	1400X2840X1830	2500	1500X3400X300
EDG-360E	360	320	320	290	P158LE-1	546	492	498	444	104	128X142	V-8	1400X2880X1830	2700	1500X3400X350
EDG-400E	400	352	360	320	P158LE	623	563	547	494	115.7	128X142	V-8	1400X2880X1830	2700	1500X3400X350
EDG-420E	420	400	380	360	P158LE-S	654	600	600	546	122.7	128X142	V-8	1400X2880X1830	2700	1500X3400X350
EDG-500E	500	450	450	410	P180LE	734	674	676	602	144.6	128X142	V-10	1400X3090X1830	3200	1500X3600X400
EDG-520E	520	450	470	410	P180LE-S	771	674	705	615	138.1	128X142	V-10	1400X3090X1830	3200	1500X3600X400
EDG-610E	610	528	555	480	P222LE	898	781	803	723	173.5	128X142	V-12	1400X3310X1880	3900	1600X3800X400
EDG-630E	630	550	570	500	P222LE-S	927	820	850	750	166.1	128X142	V-12	1400X3310X1880	3900	1600X3800X400
EDG-650E	650	560	590	510	P222FE	967	832	896	774	191.7	128X142	V-12	1620X3270X2050	3900	1600X3800X400

DOOSAN GAS ENGINE (G-SERIES)

GENERATOR SET					DOOSAN ENGINE							GEN SET PHYSICAL DATA		
MODEL	STANDBY(kw)		PRIME(kw)		MODEL	STANDBY(Ps)		PRIME(Ps)		BORE & STROKE (mm)	NO. OF CYLINDER	DIMENSION WxLxH(mm)	WEIGHT (Kg)	PAD SIZE WxLxH(mm)
	60Hz (1800rpm)	50Hz (1500rpm)	60Hz (1800rpm)	50Hz (1500rpm)		60Hz (1800rpm)	50Hz (1500rpm)	60Hz (1800rpm)	50Hz (1500rpm)					
EDG-135G			135	108	GE08TIR			204	174		L-6	2,684x1,151x1,763	2,300	3,100x1,300x300
EDG-175G			175	140	GE12TIR			272	238		L-6	2,800x1,151x1,763	2,700	3,600x1,675x350
EDG-235G			235	188	GV158TIR			367	313		V-8	2,823x1,244x1,850	3,400	3,750x1,800x400
EDG-300G			300	240	GV180TIR			462	394		V-10	3,100x1,380x2,050	3,900	4,050x1,800x400
EDG-370G			370	296	GV222TIR			557	476		V-12	3,400x1,620x2,050	4,320	4,200x1,800x400

CONTAINERIZED GENERATOR SET (CG-SERIES)

MODEL	60Hz (1800rpm)				50Hz (1500rpm)				Diesel Engine		
	PRIME		STANDBY		PRIME		STANDBY		MODEL	ASPIRATION	GOVERNOR
	kW	kVA	kW	kVA	kW	kVA	kW	kVA			
EDCG-1000D	904	1,130	1,000	1,250	800	1,000	880	1,010	P180LE x 2	TI	Electric
EDCG-1030D	946	1,182	1,030	1,288	824	1,030	906	1,132	P180LE-S x 2	TI	Electric
EDCG-1200D	1,082	1,352	1,200	1,500	960	1,200	1,056	1,320	P222LE x 2	TI	Electric
EDCG-1250D	1,144	1,420	1,250	1,562	1,010	1,262	1,108	1,386	P222LE-S x 2	TI	Electric
EDCG-1300D	1,208	1,510	1,300	1,626	1,044	1,306	1,124	1,406	P222FE x 2	TI	Electric

CUMMINS ENGINE (C-SERIES)

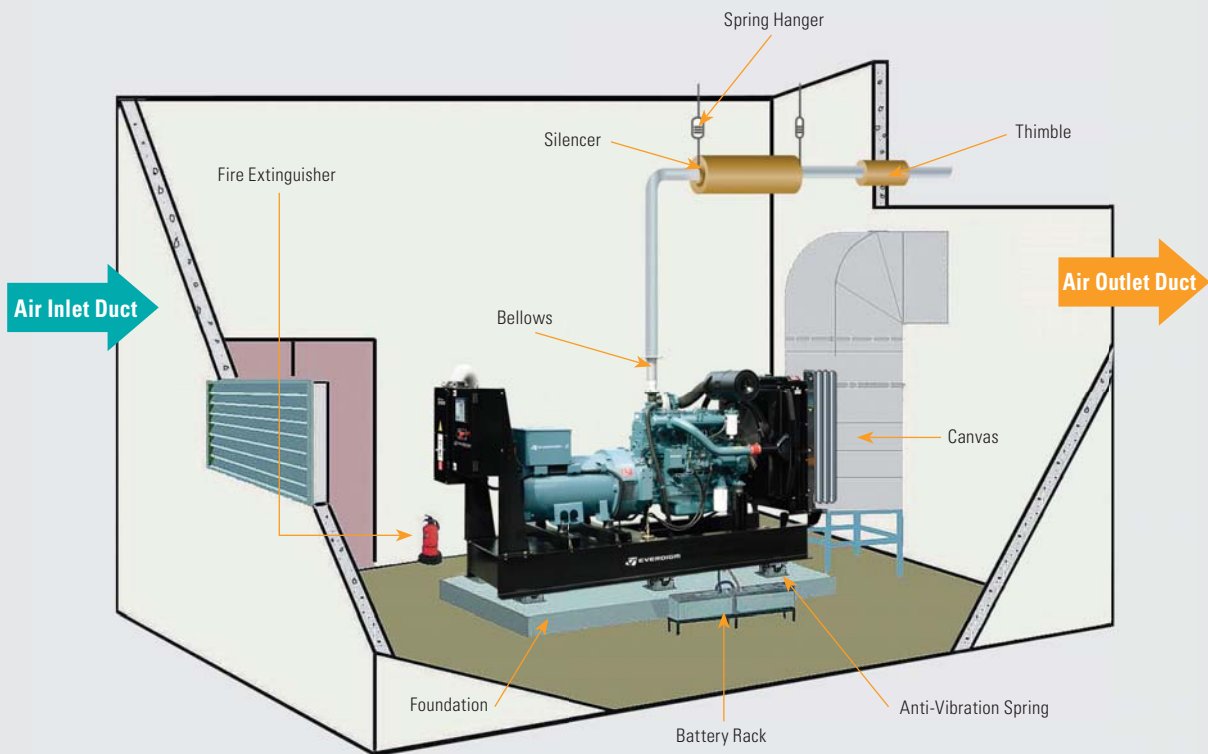
GENERATOR SET				CUMMINS ENGINE							GEN SET PHYSICAL DATA				
MODEL	STANDBY(kw)		PRIME(kw)		MODEL	STANDBY(Ps)		PRIME(Ps)		BORE & STROKE (mm)	FUEL CONSUMPTION (L/H)	NO. OF CYLINDER	DIMENSION WxLxH(mm)	WEIGHT (Kg)	PAD SIZE WxLxH(mm)
	60Hz (1800rpm)	50Hz (1500rpm)	60Hz (1800rpm)	50Hz (1500rpm)		60Hz (1800rpm)	50Hz (1500rpm)	60Hz (1800rpm)	50Hz (1500rpm)						
EDG-35C	35		32		X3.3G2	56		51		91X127	12.2	4	930X1753X1250	745	1600X2400X100
EDG-50C	50	44	45	32	4BT3.3G3	60	51	54	46	95X115	13	4	930X1753X1256	711	1600X2400X100
EDG-70C	70		65		4BTA3.9G2	84		77		102X120	20	4	1046X1950X1221	1014	1300X2500X200
EDG-100C	100	88	90	80	4ISBeG1	118	102	108	94	102X120	25	4	1046X1977X1311	1162	1400X2500X200
EDG-135C	135	120	122	109	6BTA5.9G2	164	145	150	133	102X120	41	6	1100X2404X1472	1167	1600X2800X200
EDG-175C	175	140	160	126	QSB7G5	242	213	208	182	107X124	59	6	1100X2656X1658	1544	1600X3000X250
EDG-200C	200	160	180	146	QSB7G5	242	213	208	182	107X124	59	6	1100X2656X1658	1544	1700X3200X250
EDG-225C	225		205		6CTAA8.3G2	263		226		114X135	68	6	1300X2686X1547	1940	1700X3300X250
EDG-250C	250	220	225	200	QSL9G5	355	310	307	268	114X145	89	6	1100X3135X1928	2518	1700X3300X250
EDG-275C	275	240	250	220	QSL9G5	355	310	307	268	114X145	89	6	1100X3549X2078	2518	2200X3800X200
EDG-300C	300	264	275	240	QSL9G5	355	310	307	268	114X145	89	6	1100X3549X2078	2518	2200X3800X200
EDG-350C	350		320		NTA855G3	399		358		140X152	96	6	1100X3549X2078	3373	2200X3800X250
EDG-400C	400				NTA855G5	451				140X152	110	6	1100X3549X2115	3493	1600X3800X300
EDG-450C	450		409		Qsx15G9	563		507		137X169	136	6	1500X3427X2066	3987	1400X3400X400
EDG-500C	500		455		Qsx15G9	563		507		137X169	136	6	1500X3427X2066	4137	2100X4100X300
EDG-600C	603	565	545		VTA28G5	671	612	608		140X152	173	12	1608X4047X1942	5491	2000X4400X400
EDG-750C	750	660	680	600	QSK23G3	895	768	809	701	170X170	212	6	1879X4266X2052	6387	2400X4900X400
EDG-800C	800	720	725	656	QSK23G3	895	768	809	701	170X170	212	6	1879X4266X2052	6387	2300X5000X400
EDG-900C	925	833	835	751	QST30G3	1007	895	910	806	140X165	228	12	1685X4297X2079	6117	2400X5000X500
EDG-1000C	1012	888	920	800	QST30G4	1112	970	1007	880	140X165	267	12	1702X4571X2332	7195	2400X5600X500
EDG-1250C	1270	1120	1120	1005	KTA50G3	1380	1227	1300	1150	159X159	330	16	2000X5105X2238	9099	2500X5800X450
EDG-1500C	1545		1286		KTA50G9	1656		1384		159X159	392	16	2033X5690X2330	10024	3000X6000X500
EDG-2000C	2000		1825		QSK60G6	2180		1975		159X190	521	16	2286X6175X2537	14863	3000X7000X500
EDG-2250C	2250				QSK60G9	2425				159X190	569	16	2494X6175X3115	16690	3000X7000X500
EDG-2500C	2500		2336		QSK78G6	2818		2515		170X190	663	18	2750X6965X3360	20588	2900X6200X600
EDG-2750C	2750		2500		QSK78G8	3028		2737		170X190	701	18	2946X6965X3371	20790	2900X6200X601

MTU ENGINE (M-SERIES)

GENERATOR SET				MTU ENGINE							GEN SET PHYSICAL DATA				
MODEL	STANDBY(kw)		PRIME(kw)		MODEL	STANDBY(Ps)		PRIME(Ps)		FUEL CONSUMPTION (L/H)	BORE & STROKE (mm)	NO. OF CYLINDER	DIMENSION WxLxH(mm)	WEIGHT (Kg)	PAD SIZE WxLxH(mm)
	60Hz (1800rpm)	50Hz (1500rpm)	60Hz (1800rpm)	50Hz (1500rpm)		60Hz (1800rpm)	50Hz (1500rpm)	60Hz (1800rpm)	50Hz (1500rpm)						
EDG-275M	275	240	250	220	6R1600G70S	418	367	381	334	73	122 X 150	6	3658 X 1422 X 1854	3209	3209
EDG-300M	300	260	275	240	6R1600G80S	460	403	418	367	79	122 X 150	6	3658 X 1422 X 1854	3209	3209
EDG-360M	360	320	330	290	8V1600G70S	547	480	497	436	97	122 X 150	8	2927 X 1875 X 1965	3815	3815
EDG-400M	400	350	365	320	8V1600G80S	601	528	547	480	105	122 X 150	8	3158 X 1875 X 1965	3992	3992
EDG-400M2	--	400	--	360	10V1600G70S	--	601	--	546	--	122 X 150	10	3828 X 1784 X 1969	4746	4746
EDG-500M	500	450	460	400	10V1600G80S	752	661	685	601	121	122 X 150	10	3828 X 1784 X 1969	4746	4746
EDG-550M	550	520	500	470	12V1600G70S	822	772	752	702	138	122 X 150	12	3993 X 1900 X 2069	5972	5972
EDG-600M	600	572	550	520	12V1600G80S	895	850	815	772	148	122 X 150	12	3993 X 1900 X 2069	5972	5972
EDG-700M	700	550	636	500	12V2000G45	1046	851	952	777	192	130 X 150	12	4520 X 1702 X 2221	5802	5802
EDG-770M	770	670	700	610	12V2000G85	1173	1025	1067	932	209	130 X 150	12	4520 X 1702 X 2221	6111	6111
EDG-900M	900	800	820	727	16V2000G45	1354	1193	1227	1086	240	130 X 150	16	4865 X 1783 X 2375	6983	6983
EDG-1000M	1000	870	910	800	16V2000G85	1495	1307	1354	1193	265	130 X 150	16	4865 X 1783 X 2375	7328	7328
EDG-1200M	1200	980	1090	890	18V2000G85	1756	1475	1597	1340	314	130 X 150	18	5036 X 2140 X 2495	7959	7959
EDG-1250M	1250	1100	1136	1000	12V4000G41R	1838	1625	1670	1477	313	165 X 190	12	5815 X 2152 X 2450	10294	10294
EDG-1600M	1600	1450	1400	1320	12V4000G43	2327	2111	2038	1903	404	170 X 210	12	6466 X 2152 X 2450	11337	11337
EDG-1750M	1750	1600	1600	1430	12V4000G83	2560	2346	2327	2111	459	170 X 210	12	6466 X 2152 X 2450	11337	11337
EDG-2100M	2100	1800	1880	1650	16V4000G43	3056	2634	2708	2410	537	170 X 210	16	7300 X 2377 X 3285	15183	15183
EDG-2300M	2300	2000	2100	1820	16V4000G83	3351	2929	3056	2634	609	170 X 210	16	7300 X 2377 X 3285	15433	15433
EDG-2500M	2500	2250	2300	2030	20V4000G43	3673	3244	3338	2949	619	170 X 210	20	7939 X 2377 X 3285	16182	16182
EDG-2750M	2750	2500	2500	2220	20V4000G83	4035	3579	3673	3244	701	170 X 210	20	7939 X 2377 X 3285	16182	16182
EDG-3250M	3250	2650	2800	2420	20V4000G83L	4678	3820	4035	3472	878	170 X 210	20	8109 X 2377 X 3285	20673	20673

EVERDIGM Diesel Generator Set

INSTALLATION DATA



*Specifications in this catalogue are subject to change without prior notice.



Distributed by

Sales & Marketing

Room#1203, Woolim Lion's Valley 2, 680 Gasan-dong,
Geuncheon-gu, Seoul, Korea

Tel +82-2-801-0853 Fax +82-2-801-0899

EVERDIGM

©EVERDIGM Corp. Printed in Korea